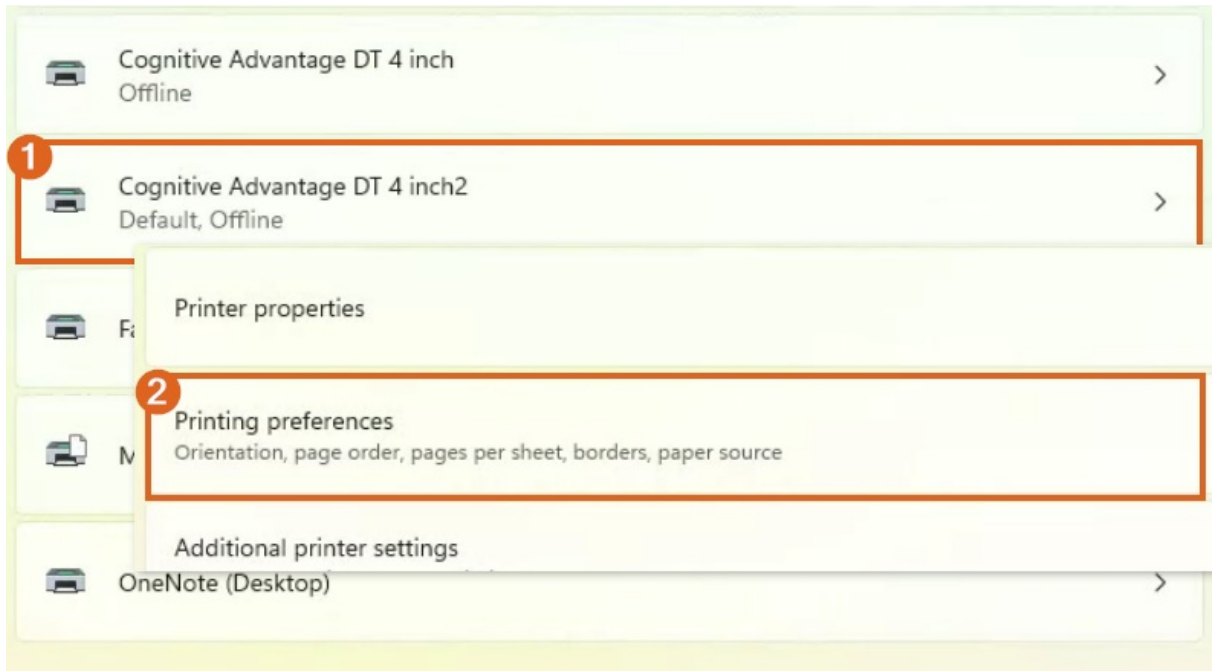


Printer Recalibration after Changing Paper

Last Modified on 05/06/2026 12:17 pm EDT

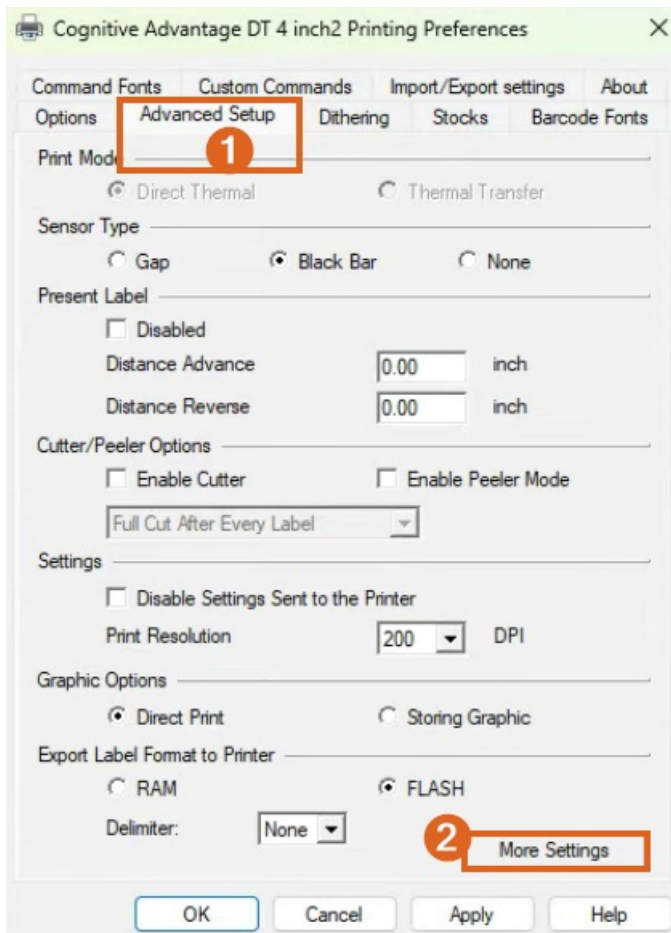
Go to *Settings / Bluetooth and devices / Printers & scanners*.

1. Select the *Cognitive Advantage 4 inch2* printer.

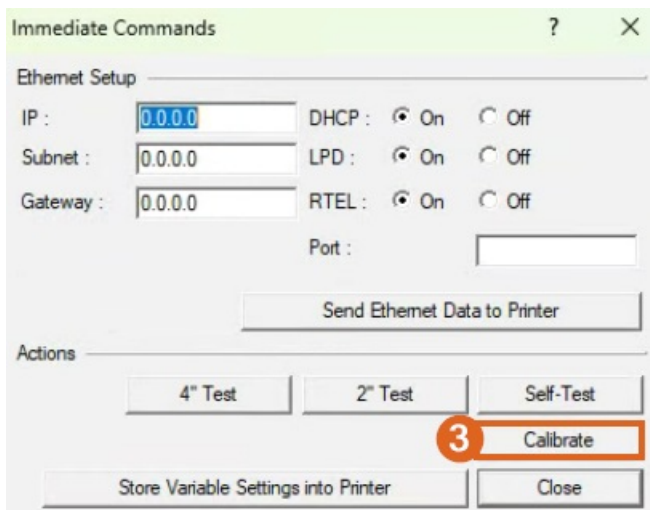


Note: If using the stylus that came with the truck computer, hold the button on the side of the stylus then choose the Printer icon. If using something other than the default stylus, hold on the Printer icon until a circle is drawn around the icon. Lift off the screen and the menu will display.

2. Select *Printing preferences* to open the preferences window.
 1. Select the *Advanced Setup* tab.
 2. Then choose **More Settings**.



3. Select **Calibrate**. One inch of paper will come out of the printer.



3. When done, select **Close** then **OK**.

4. Repeat Steps 2 - 6 and choose *Cognitive Advantage 4 inch2* for Step 3.